

Model Question Paper
A Representative Study of Mammals (B) - Part I

10th Standard

Science

Reg.No. :

--	--	--	--	--	--

- I. Answer all the questions.
- II. Use Blue pen only.
- III. Question No 14 is compulsory.

Time : 01:00:00 Hrs

Total Marks : 30

5 x 1 = 5

Section-A

- 1) Select important characteristic features of mammals
(a) four-chambered heart (b) fore-limbs and hind limbs (c) milk-producing glands (d) post anal tail
- 2) Carnivorous animals use these teeth to tear flesh.
(a) incisors (b) canines (c) premolars (d) molars
- 3) The Henle's loop of nephron is mainly responsible for reabsorption of water in the kidney. Which of the following has a long loop of Henle in its nephrons to conserve water?
(a) polar bear (b) camel (c) frog (d) whale
- 4) Which blood cells of mammals are concerned with immunity?
(a) Young Erythrocytes (b) Leucocytes (c) Thrombocytes (d) Matured Erythrocytes
- 5) You were given two unlabelled slides with blood smears of an amphibian and a mammal. You would differentiate the blood samples by observing the _____.
(a) colour (b) nature of RBC's (c) nature of WBC's (d) contents of plasma

Section-B

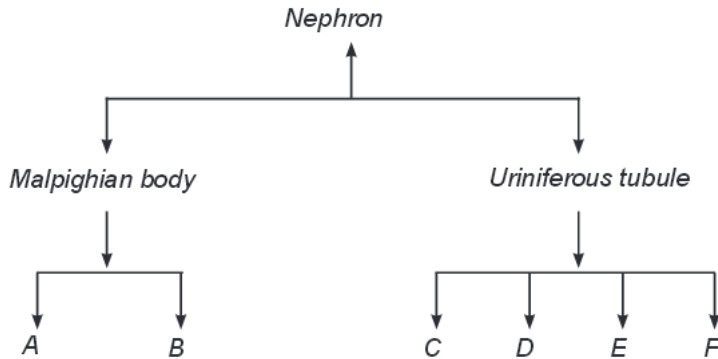
8 x 2 = 16

- 6) Mention the two unique characteristics of mammals.
- 7) Give two examples each: (i) ruminating mammals (ii) marine mammals.
- 8) What type of dentition is seen in mammals? What are elephant tusks?
- 9) Mention any four adaptations seen in the camel so that it can live successfully in deserts.
- 10) What is echo location? Give an example.
- 11) Mention the various valves and their location in the human heart.
- 12) Write any four differences between arteries and veins in mammals.
- 13) Name the three important blood proteins seen in plasma. Add a note on their functions.

Section-C

2 x 5 = 10

- 14) a) Observe the chart depicting the structure of a nephron.



- i) Mention the structures A to F ii) Explain the main function of a nephron.

(OR)

- b) With a suitable diagram, describe the structure and functions of the human heart.
