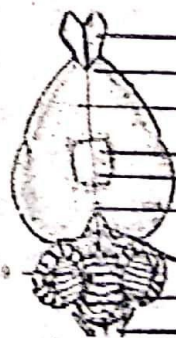


16. Assertion (A) : The Relative Molecular Mass of Chlorine is 35.5 a.m.u.
Reason (R): The natural abundance of Chlorine isotopes are not equal.
i) A and R are correct, R explains the A. ii) A is correct, R is wrong.
iii) A is wrong, R is correct. iv) A and R are correct, R doesn't explain A.
17. Define : Atomicity
18. Give any two examples for hetero diatomic molecules.
19. Match the Following
- | | | |
|--------------------|---|------------------------|
| a. Avagadro number | - | $C_{12} H_{22} O_{11}$ |
| b. Molar Volume | - | $C_6 H_{12} O_6$ |
| c. Glucose | - | 6.023×10^{23} |
| d. Sucrose | - | 22.4 Litre |
20. Calculate % of Sulphur " S " in H_2SO_4
21. Draw and label the structure of oxysomes.
22. Name the three basic tissues system in flowering plants.
23. Write the reaction for photosynthesis.
24. Differentiate dicot and monocot leaf.
25. Write the functions of epidermal tissue system.
26. Match the Following :
- | Organs | Membranous covering |
|-----------|---------------------|
| a. Brain | - capsule |
| b. Kidney | - pleura |
| c. Heart | - meninges |
| d. Lungs | - pericardium |
27. a) Give the common name of the Hirudinaria granulose.
b) How does leech respire?
28. Leeches do not have an elaborate secretion of digestive juices and enzymes - why?
29. Identify the Diagram and label parts given
- cerebellum
 - Olfactory lobe
 - Medulla oblongata
30. Why is the tooth of rabbit called heterodont?



Part - III

Answer any one from each section of the following :

2×5=10

Section - 1

31. a) Derive the Relation between g and G .
b) State the universal law of gravitation.
32. Derive the relationship between Relative molecular mass and Vapour density.

Section - 2

33. Explain the T.S. of a dicot root with suitable diagram.
34. How does locomotion take place in leech?