

Xerophytes

The plants which are living in dry or xeric condition are known as **Xerophytes**.

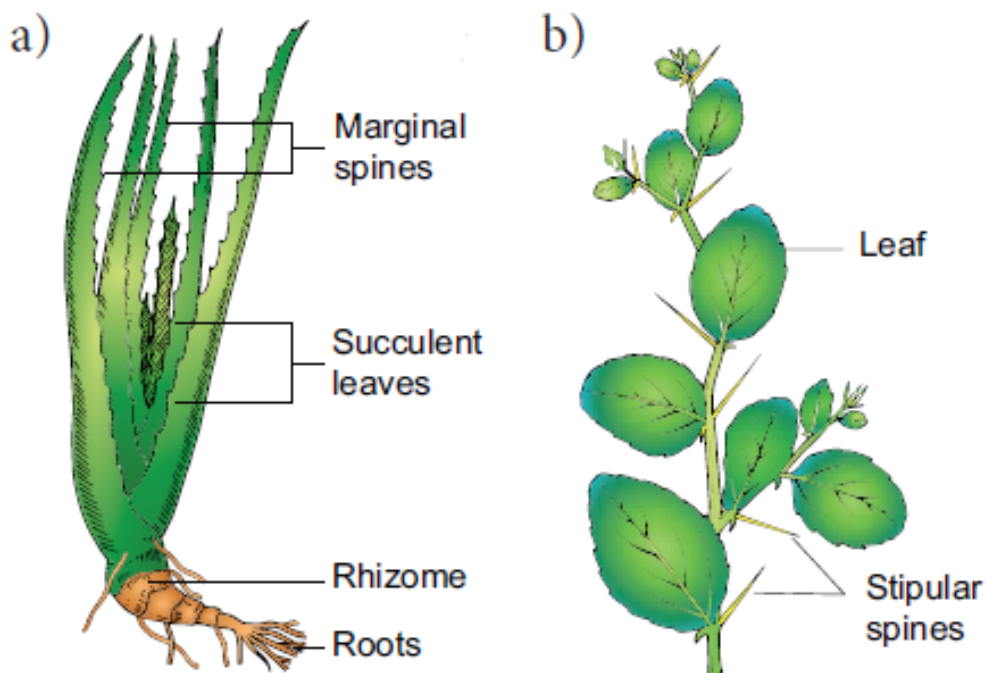
Xerophytic habitat can be of two different types. They are:

a. Physical dryness: In these habitats, soil has a little amount of water due to the inability of the soil to hold water because of low rainfall.

b. Physiological dryness: In these habitats, water is sufficiently present but plants are unable to absorb it because of the absence of capillary spaces. Example: Plants in salty and acidic soil.

Based on adaptive characters xerophytes are classified into three categories. They are Ephemerals, Succulents and Non succulent plants.

a) Succulent xerophyte – *Aloe* b) Non succulent perennial - *Ziziphus*



a) A succulent xerophyte: Phylloclade – *Opuntia*

b) Non succulent: Perennial – *Capparis*

c) Cladode of *Asparagus*

d) Phyllode – *Acacia*

